



**Boston  
Children's  
Hospital**

Until every child is well™

Global Health  
Program



HARVARD MEDICAL SCHOOL  
TEACHING HOSPITAL

**GLOBAL HEALTH**

**Fellowship**

**Recruitment 2020**



Global  
**Pediatric**  
Fellowship

**Application Deadline**

**September 30, 2019**

**Online Application Form**

**<http://tiny.cc/fellowship2020>**



**Staff**

Michelle Niescierenko, MD, MPH  
*Director*

Katy Weinberg, MBA  
*Program Manager*

Mirona Dragnea, JD  
*Global Risk Manager*

**Leadership**

**Global Pediatric Fellowship**

Kim Wilson, MD, MPH *Fellowship Director*  
Michelle Niescierenko, MD, MPH  
Judith Palfrey, MD  
Christiana Russ, MD, DTMH Joia  
Mukherjee, MD, MPH

**Global Research Fellowship,**

Michelle Niescierenko, MD, MPH  
Christiana Russ, MD, DTMH

**Office**

2 Avenue Louis Pasteur, L-423  
Boston, MA 02115

**Mailing Address**

300 Longwood Avenue, BCH3413  
Boston, MA 02115

**E-mail**

[globalhealth@childrens.harvard.edu](mailto:globalhealth@childrens.harvard.edu)

**Phone**

617-919-1257

**Website**

[bostonchildrens.org/globalhealth](http://bostonchildrens.org/globalhealth)

# Table of Contents

## Global Pediatric Fellowship

Overview	4
How to Apply	5
Field Sites	6
Roles & Objectives	8
Curriculum	9
Leadership	11
Fellows	13
Graduates	15

# Boston Children's Global Health Fellowship Programs

Training future leaders in global child health, to support the development of essential child health services in regions of the world with the greatest need

## Multidisciplinary



Pediatric  
Nursing  
Pharmacy  
Emergency  
Neurosurgery

# Global Pediatric Fellowship



## OVERVIEW

---

The Global Pediatric Fellowship Program at Boston Children's Hospital aims to train future leaders in global child health as well as support the development of essential child health services in regions of the world with greatest need and limited access to health providers. Our goal is to train a cadre of pediatricians who have the skills and long term commitment necessary to make an impact in improving child health in some of the neediest global settings. For many fellows, we anticipate achieving this goal will require completion of a 3 year fellowship program.

The focus of the fellowship is on skills in global health service delivery, including skills in clinical care, medical education, program development, management, evaluation, quality improvement, and in implementation focused research.

During their field placement, fellows will work in collaboration with partners around the globe including Liberia, Ghana, Partners in Health in Rwanda and Haiti or Laos Friends Hospital for Children to support pediatric medical education, strengthen existing child health programs, and expand access to pediatric health care.

During their clinical placement in Boston, fellows will combine clinical work in general pediatrics with a global health curriculum aimed at strengthening their core clinical, public health, quality improvement, and teaching skills relevant to global health. Fellows will receive a clinical appointment, salary and full employee benefits package at BCH. Fellows will also be recommended for an academic appointment at Harvard Medical School as a Clinical Fellow. Some fellow placements will include opportunities for clinical work with US underserved communities.

Formal course work is an important and required part of fellowship. Opportunities for accepted and qualifying fellows to pursue, may include a Master's in Public Health from Harvard T.H. Chan School of Public Health, Summer Program in Clinical Effectiveness (HSPH), Global Health Delivery Intensive (HSPH), and the Gorgas Diploma in Tropical Medicine Course. Opportunities and funding support vary by year. Additional details will be provided during interviews.

## HOW TO APPLY

---



### Application Form

Deadline to Apply: September 30, 2019

Applications must be submitted through our online form:

<http://tiny.cc/fellowship2020>

In addition to the application form, the following documents are required:

- Curriculum Vitae
- Personal Statement
- Letters of Recommendation (2)



### Timeline

July 2019

Application Period Opens

September 30, 2019

Application Deadline

Please apply early!  
Invitations to interview will be made on a rolling basis.

October, 2019

Interview Days – Oct 7<sup>th</sup> and Oct 21<sup>st</sup>

July 1, 2020

Fellowship Start Date



### Requirements

**Applicants must be Board-certified/eligible in Pediatrics or Medicine-Pediatrics by the American Board of Pediatrics**

**International Medical Graduates, including graduates from Canadian medical schools, must pass USMLE Steps 1, 2, and 3 by December 31, 2019**

**We welcome candidates with interests in:**

- Collaborative learning, teaching and mentorship
- Commitment to the improvement of healthcare within the public sector
- Community outreach, primary care, hospital based tertiary care
- Using basic quality improvement methodology and public health research methods to improve health care delivery
- Social justice

**The ideal candidate would have the following qualifications:**

- A willingness to learn languages as needed (Creole for Haiti)
- Prior experience in health care delivery in low resource settings
- A talent for teaching and an interest in medical education
- Interest in program development and/or quality improvement

## FIELD SITES

---

### **Laos- *Laos Friends Hospital for Children***

Laos Friends Hospital for Children (LFHC) opened in February 2015, and provides free medical care to over 15,000 children annually. Children and families often travel long distances, up to 8 hours, to receive the medical care available at LFHC as the only pediatric specific care in the north of Laos. Every child is treated with high-quality and compassionate medical care, following the motto of “Treat every patient as if your own child.” The hospital was developed by Friends Without a Border and is designed to integrate into the national healthcare system. Fellows working at this site will support the training of the Laos General Practitioners and nurses who staff the hospital to develop pediatric knowledge and expertise in practice. LFHC actively supports quality improvement projects, medical education for the staff and community outreach projects. Fellows at this site will work along side the Laos clinicians providing patient care in the outpatient, inpatient, emergency room, neonatal unit and post-surgical care areas as well as give lectures and run skills/simulation sessions. Fellows will be invited to join ongoing hospital-wide QI and research projects as well as support the initiation of new projects.

### **Liberia- *Health Workforce Program***

Boston Children’s Hospital has partnered with multiple organizations in Liberia (The Ministry of Health, JFK Medical Center, Liberia College of Physicians and Surgeons and the University of Liberia) for the last ten years. Current work focuses on collaborating to support Liberia’s only pediatric residency training program and improving quality of pediatric care at the teaching hospital. Fellows at the Liberia site join an international team at John F. Kennedy Medical Center as pediatric faculty for the Liberian residents, interns and medical students. Pediatricians work alongside trainees in inpatient and outpatient settings to teach clinical and didactic medicine. The pediatrics department carries out research projects relevant and prioritized by the hospital which fellows are welcome to join, help develop and operate.

### **Rwanda- *Partners In Health “Inshuti Mu Buzima”***

Partners In Health-Inshuti Mu Buzima (PIH-IMB) was invited by the Rwanda Ministry of Health (MOH) to support the health system in 3 rural districts in 2005. Since that time, PIH-IMB has partnered closely with the central and district level MOH to support high quality care delivery at the community, health center, and district hospital levels, with strong advocacy, policy, and monitoring and evaluation platforms. The organization works to address core social determinants of health through a variety of clinical and non-clinical core and innovative programs, and share field experience with central level policy makers for national scale-up of successful models of care delivery.

Pediatric global health fellows form a key part of the PIH-IMB pediatric team and serve in the role of District Clinical Advisor (DCA). Pediatric DCAs are assigned to a District Hospital where they support medical education and training in pediatric, malnutrition and neonatal and developmental care for MOH hospital staff (Rwandan general practitioners and nurses). They work side-by-side with the MOH hospital pediatric team, provide case-based teaching, and work together to identify key system-based challenges for quality improvement initiatives to be led by the hospital teams. Fellows collaborate with and report to the IMB District Clinical Director and the MOH Hospital Director. Additionally, DCAs have the flexibility to choose an area of interest to focus on for their scholarly work and can choose among the wide variety of clinical, training, medical education, quality improvement and research activities that are ongoing within the Pediatric Program at the community, health center, hospital and policy levels.

## Haiti- *Partners In Health-Zanmi Lasante*

*\*\*\*Temporarily postponed due to political unrest\*\*\**

The GPP has a long standing partnership with Zanmi Lasante, PIH's sister organization that provides care along with the Haitian Ministry of Health at 11 rural hospitals and health centers in Haiti. Fellows are placed at one of the ZL-supported hospitals where they work alongside Haitian pediatricians, generalist doctors, and nurses to provide care on inpatient pediatrics wards, and to initiate and participate in quality improvement initiatives with the clinical team. In addition to inpatient work, fellows participate in providing medical education for Haitian residents, medical students, and other trainees. Because of the very dangerous situation in Haiti this year, we are postponing any fellow placements until the unrest subsides. We are still sponsoring an Observership at BCH for Haitian residents and encourage our Fellows to participate in welcoming and mentoring our Haitian colleagues here.

## Other Sites

Boston Children's Global Health Program partners in other countries with clinical and project opportunities that can be individualized based on the interests of the fellow. These partnership locations can include Ghana, Guatemala, India, Tanzania, Zambia, Zanzibar and others. Ask what's new during your interview day!

## Other Partners

Boston Children's Global Health Program partners with non-governmental organizations (NGOs) universities and teaching hospitals around the world. These collaborations are continuously evolving. Ask what's new during your interview day!

## ROLES & OBJECTIVES

---

### Objectives for Learning

Fellows will serve as an integrated member for the field team, and engage in pediatric clinical care, medical education, quality improvement and program development in collaboration with the local team and site determined needs.

Through this experience, we anticipate that fellows will gain skills in providing clinical care in global, resource limited settings, in advocacy and culturally appropriate care, in collaboration to improve quality of care by implementing clinical guidelines, and in didactic and bedside teaching.

In addition, fellows will be expected to actively take a leadership role in developing a QI and/or medical education initiative, and to complete a scholarly project over the period of the fellowship. Fellows will plan and execute these activities in collaboration with the field mentors as well as with their fellowship mentors.

### Objectives for Work

- To enhance the quality of education of national trainees rotating through clinical services in pediatrics including postgraduates, medical students and nurses
- Support ongoing continuing medical education in pediatrics for national physicians and nurses
- To improve quality of care of patients through role modeling, enhancement of training programs and development of evidence-based clinical care guidelines and a culture of continuous quality improvement
- To support those responsible for the delivery of care to patients in pediatrics, with a focus on medical training and quality improvement in pediatric care

### Breakdown of Specific Roles

#### ***Educational/Clinical Teaching (70%)***

- Actively participate in bedside-teaching, as well as seminar-based teaching
- Participate in development and delivery of materials, programs and tools to enhance learning & teaching
- Organize & conduct seminars
- Engage in co-mentorship with national faculty to develop clinical and teaching skills
- Supervise postgraduate students in the delivery of care to patients for training purposes
- In collaboration with national faculty, assist in development and/or enhancement of clinical guidelines, as well as innovative therapeutic and diagnostic approaches in pediatrics

#### ***Admin, Program Dev. & Research (30%)***

- In collaboration with national faculty, work to improve quality of care and implementation of evidence based guidelines for pediatrics
- Work collaboratively with NGO and/or local leadership in program planning, monitoring and management to improve quality of pediatric care
- Work in partnership with national counterparts to identify and develop opportunities for quality improvement projects
- Work collaboratively with NGO leadership, national counterparts and fellowship mentors to develop and implement a scholarly project.



## CURRICULUM

---

### Formal Global Health Degree Programs & Courses

Formal course work is an important and required part of fellowship. Opportunities for accepted and qualifying fellows to pursue, may include a Master's in Public Health from Harvard T.H. Chan School of Public Health, Summer Program in Clinical Effectiveness (HSPH), Global Health Delivery Intensive (HSPH), and the Gorgas Diploma in Tropical Medicine Course. Opportunities and funding support vary by year. Additional details will be provided during interviews.



### Global Health Curriculum at Boston Children's Hospital

#### Clinical Skills Week

The Global Pediatric Clinical Skills Week is an annual course which provides an overview of key topics for pediatric clinicians to help prepare them for clinical work in resource limited and developing settings.

#### Clinical Core Topics in Global Health

This two-day course is a combination of didactic and case-based teaching, and hands-on skills workshops. Our multi-disciplinary faculty will present evidence-based guidelines for the management of common illnesses and tropical diseases affecting children in developing countries. A series of workshops will provide learners with the opportunity to gain practical skills training using case-based simulations & hands-on skills stations.

Topics include:

Climate Change • Dengue • HIV • IMCI • Malaria • Malnutrition • Newborn Care • Parasites • Respiratory Infections • Tuberculosis • Trauma & Emergencies • Sedation • Lines, Tubes & Wounds • Medication Safety

#### Ultrasound Course

This interactive two-day course will provide the foundation for integration of ultrasound into clinical practice with a focus on use in resource limited settings. The course provides an overview of basic ultrasound physics, machine use, and a review of point-of-care ultrasound applications. Each lecture will be reinforced by practical hands-on skills sessions with adult & pediatric models, allowing learners to develop comfort with scanning basics and recognition of anatomy.

Topics include:

Machine Basics & Image Acquisition • Focused Assessment with Sonography in Trauma (FAST) • Cardiac, Soft Tissue & Musculoskeletal • Abdomen & Vascular Access • Lung, Renal & Bladder

#### Helping Babies Breathe Master Trainer Course

Helping Babies Breathe (HBB) is an evidence-based curriculum using the train-the-trainer model to teach neonatal resuscitation in resource limited areas. The "Golden Minute" is the key concept of HBB. It implies that by one minute of age, the newborn baby should start breathing on his or her own, or should be ventilated with a bag and a mask. The course methodology focuses on hands-on practice using a simulator mannequin.

Topics include:

Preparation for Birth • Routine Care • The Golden Minute • Bag & Mask Ventilation • Adult Learning Principles • Implementation of HBB • Localization & Adaptation • Monitoring & Evaluation



## Seminar Series

The Global Health Seminar Series is a monthly didactic lecture that highlights work by faculty from BCH and beyond who are working effectively in global health with a goal to harness knowledge and experiences of professionals who have worked extensively in the field.

The interdisciplinary nature of this curriculum stretches learners to consider how different roles of providing health care may be met in different settings, and broadens the scope of solutions that learners may consider. In addition we draw from implementation sciences to highlight effective projects in quality improvement, research, advocacy and education in resource limited settings.



## Fellows' Seminars

The Global Fellows' Seminars are a monthly interdisciplinary educational series focused on competencies of advocacy and communication, effective medical education, ethics and conducting research in global health.

These seminars are offered exclusively to BCH GH fellows engaged in longitudinal work in global health, to assist them in building skills in capacity strengthening, collaboration, and partnership specifically in the context of their ongoing global health projects.



## LEADERSHIP

### Boston Children's Faculty



#### BOSTON CHILDREN'S HOSPITAL

Attending Physician, General Pediatrics & Associate Director, Global Pediatrics Program

#### HARVARD MEDICAL SCHOOL

Assistant Professor & Affiliate, Div. of Global Health and Social Medicine

### Kim Wilson, MD, MPH Fellowship Director

Dr. Kim Wilson's work focuses on strategies for improving health care delivery for underserved and at risk children in both domestic and global settings, with a particular focus on infants and children with chronic medical or developmental concerns and on newborn health. Dr. Wilson has worked globally in both East Africa and the Dominican Republic. Current projects include the Pediatric Developmental Clinics program in Rwanda, a multidisciplinary early intervention program to improve outcomes for infants with perinatal risk and projects leveraging mHealth technology to improve care delivery for at risk infants in both Rwanda and Tanzania. Dr. Wilson has worked in on maternal and neonatal quality improvement projects at community and hospital sites in the Dominican Republic and has lead training courses in Helping Babies Breathe in both the US and internationally. In Boston, Dr. Wilson's quality improvement focus is on care improvements for underserved and minority children with special health care needs. In addition, Dr. Wilson is engaged in medical education with a focus on learning to serve underserved populations, and is involved with medical education programs including an advocacy curriculum for US pediatric residents, a tele-education program for Rwandan pediatric residents, and the Human Resources for Health Program, an academic consortium supporting post graduate pediatric residency programs in Rwanda.



#### BOSTON CHILDREN'S HOSPITAL

Pediatric Emergency Medicine Attending & Director, Global Health Program

#### HARVARD MEDICAL SCHOOL

Assistant Professor in Pediatrics and Emergency Medicine

### Michelle Niescierenko, MD, MPH

Michelle Niescierenko, MD, MPH is a Pediatric Emergency Medicine physician and Director of the Global Health Program at BCH. The Boston Children's Global Health Program works to improve child health globally through partnerships for clinical quality improvement, education, research and advocacy. She has experience in pediatric care and program development in China, Bolivia, Lesotho, Guatemala, Liberia and Indonesia. In Liberia she provided pediatric humanitarian aid in the immediate post-conflict setting partnering local remaining infrastructure to US academic institutions. Through these partnerships, sustainable programs for health system rebuilding including physician education and care for vulnerable children were developed. Her particular areas of research interest are in the provision of emergency care for children in humanitarian settings, the development of emergency care systems for children as well as the role of children in humanitarian crises.



#### BOSTON CHILDREN'S HOSPITAL

Senior Associate in Medicine

#### HARVARD MEDICAL SCHOOL

T. Berry Brazelton Professor of Pediatrics, and Professor of Global Health and Social Medicine

#### HARVARD T.H. CHAN

#### SCHOOL OF PUBLIC HEALTH

Professor

### Judith Palfrey, MD

From 1986 to 2008, Dr. Palfrey served as the Chief of the Div. of General Pediatrics at BCH. She was the National Director of Building Bright Futures, the Director of the National Program Office of the Anne E. Dyson Pediatric Training in the Community Initiative and is a Past President of the Academic Pediatrics Association and the American Academy of Pediatrics. Dr. Palfrey has focused her career on developing programs that address the social determinants of child health. She has promoted community interventions such as home visiting, school based coordination for children with disabilities, and early education. She has been active nationally in expanding opportunities for physicians to learn how to integrate advocacy into their daily practice as well as into their overall career directions. Her book *Child Health in America, Making a Difference Through Advocacy* includes information on clinical, group, legislative and professional advocacy. As Director of the Global Pediatrics Program at BCH, she is working to establish training and service programs in international sites based on her experiences in the United States. Dr. Palfrey is working with an interdisciplinary group of Chilean and American partners on Recupera Chile, a program of community reconstruction after the 2010 earthquake in the Bio Bio region of Chile. With Christian Ross, she is working on a program to enhance medical education in China and the US.



#### **BOSTON CHILDREN'S HOSPITAL**

Associate Medical Director,  
Intermediate Care Program,  
Div. of Medicine Critical Care

#### **HARVARD MEDICAL SCHOOL**

Assistant Professor in  
Pediatrics

## Christiana Russ, MD, DTMH

Dr. Christiana Russ is a pediatric hospitalist and Associate Medical Director of the Intermediate Care Unit at Boston Children's Hospital, Co-chair of the Academy for Community and Global Health at Boston Combined Residency Program (BCRP), and co-Leader of the Global Health Pediatric Education Group in the Association of Pediatric Program Directors. She trained in medicine at the University of Tennessee, Memphis, and in pediatrics at Boston Children's Hospital. Following residency she completed the Harvard Rabkin Fellowship in Medical Education and received a diploma in Tropical Medicine and Hygiene from the London School of Hygiene and Tropical Medicine. Dr. Russ aims to advance pediatric care domestically and in global health through improving pediatric education. Her recent projects include a qualitative study about how guest faculty are perceived by local faculty and trainees in East Africa, a mixed methods study about how new pediatric residency programs develop. She is completing a study in collaboration with the International Pediatric Association, Global Pediatric Education Consortium and International Pediatric Academic Leaders Association to describe the current global pediatric workforce, distribution of training opportunities and structure and pediatric subspecialty availability and training. Her clinical interest is in intermediate care units, which provide care to complex or critically ill children requiring intense nursing and monitoring.

## Affiliated Faculty



#### **PARTNERS IN HEALTH**

Chief Medical Officer

#### **BRIGHAM & WOMEN'S HOSPITAL**

Associate Physician, Division of  
Global Health Equity

#### **HARVARD MEDICAL SCHOOL**

Teaching Affiliate, Division  
of Global Health and Social  
Medicine

## Joia Mukherjee MD, MPH

Dr. Mukherjee has been Chief Medical Officer of PIH since 2000, supporting PIH's efforts to provide high quality, comprehensive health care to the poorest and most vulnerable in partnership with local communities and health officials. Dr. Mukherjee's clinical focus in resource-poor settings has been HIV/AIDS, multi-drug resistant tuberculosis, mental health and most recently, Ebola. She is involved in the direct implementation of health programs and disease specific initiatives across PIH's 10 focus countries, as well as research and the generation of new knowledge in these arenas. In 2014, Dr. Mukherjee was one of the lead strategists in launching PIH's efforts to fight Ebola and strengthen health systems in Sierra Leone and Liberia. As an innovator, teacher, and mentor, she has been involved in leveraging the clinical implementation experience of PIH to develop the field of Global Health Delivery at Harvard Medical School. As such she teaches healthcare professionals and emerging leaders in the Department of Global Health and Social Medicine at Harvard Medical School where she has developed and now runs the Masters of Medical Science program in Global Health Delivery—a program to build research capacity among global health professionals from all over the world. She also teaches Global Health Delivery, social medicine, infectious disease and human rights to medical students, residents and fellows at a wide variety of US and international institutions. Dr. Mukherjee's academic work and field experience includes expanding HIV and TB services through the public sector and linking such programs to the revitalization of primary health care. Her scholarly work is focused upon generating a body of evidence to inform the development of health care delivery systems that can effectively address the burden of disease in resource poor settings. Dr. Mukherjee serves on the board of directors for Last Mile Health (Liberia), Village Health Works (Burundi) and Project Muso (Mali). She also consults for the World Health Organization and other international agencies on health systems strengthening, human resources for health, the treatment for HIV, Hepatitis C and the control of drug resistant tuberculosis.

## CURRENT FELLOWS

---



**Eilan Levkowitz, DO**  
**2019-2021**

**FIELD SITE**

Laos Friends Hospital for Children  
(Luang Prabang, Laos)

**STAFF PHYSICIAN**

Children's Hospital and West Jefferson  
Medical Center, New Orleans

**RESIDENCY IN PEDIATRICS**

LSU Health Science Center

**DO**

Kansas City University of Medicine



**Himali Bhatt, MD**  
**2019-2021**

**FIELD SITE**

Kirehe District Hospital,  
Inshuti Mu Buzima-PIH (Kirehe, Rwanda)

**PEDIATRIC CHIEF RESIDENT**

Phoenix Children's and Maricopa Medical Center

**RESIDENCY IN PEDIATRICS**

Phoenix Children's and Maricopa Medical Center

**MD**

University of Arizona



**Georgia Christakis, MD**  
**2019-2021**

**FIELD SITE**

TBD

**PEDIATRIC CHIEF RESIDENT**

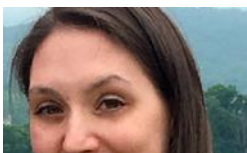
Maria Faria Children's Hospital, New York Medical College

**RESIDENCY IN PEDIATRICS**

Maria Faria Children's Hospital, New York Medical College

**MD**

Florida State University





## Rebecca Krey, MD

2018-2020

**FIELD SITE**

University Hospital in Mirebalais,  
Zanmi Lasante-PIH (Mirebalais, Haiti)

**CHIEF RESIDENCY IN GLOBAL HEALTH**

University of Maryland Medical Center

**RESIDENCY IN INTERNAL MEDICINE AND PEDIATRICS**

University of Maryland Medical Center and  
Baltimore Veterans Affairs Medical Center

**MD**

Virginia Commonwealth University  
School of Medicine

## Edwin Palmer, MD

2018-2020

**FIELD SITE**

Laos Friends Hospital for Children  
(Luang Prabang, Laos)

**MPH (in progress)**

Harvard T.H. Chan School of Public Health

**RESIDENCY IN INTERNAL MEDICINE AND PEDIATRICS**

University of Cincinnati--Cincinnati Children's Hospital

**MD**

Ross University



## Leah Ratner, MD

2018-2020

**FIELD SITE**

Ghana

**MS**

Brandeis University Heller School for Sustainable International Development

**CHIEF RESIDENCY IN GLOBAL HEALTH**

Georgetown University Hospital

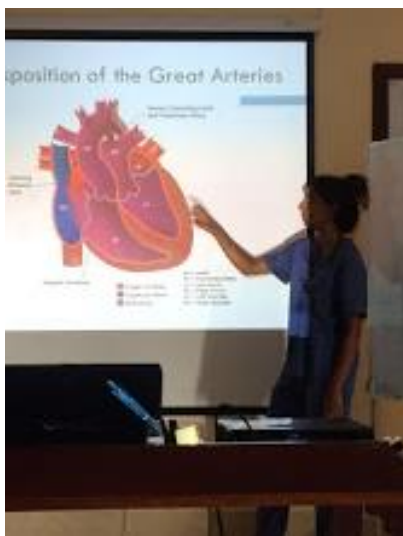
**RESIDENCY IN INTERNAL MEDICINE AND PEDIATRICS**

Georgetown University Hospital

**MD**

St. George's University School of Medicine

## GRADUATES



### Shela Sridhar, MD

2017-2019

During her fellowship, Dr. Sridhar worked at the Kirehe District Hospital in Rwanda rounding on the pediatric wards and the NICU. During her time, she worked on triage systems within the pediatric ward through the implementation of the Pediatric Early Warning Score (PEWS). She also focused on teaching multidisciplinary teams through malnutrition rounds, lectures and bedside teaching. She is now a med-peds hospitalist at Brigham and Women's Hospital and Boston Children's Hospital. She continues to work on health system strengthening and teaching in sub-Saharan Africa.

### Meghan Craven, MD

2017-2019

Dr. Craven worked in Haiti at the Mirebalais Hospital, where she saw patients on the units along with the residents and introduced QI methodology. While there, she served in the newly formed non-communicable disease program, which works to develop treatment plans for children with sickle cell disease, diabetes and cardiac problems, including introducing hydroxyurea for sickle cell patients. She is now a fellow in endocrinology at Children's Hospital of Philadelphia, and plans to continue her work in global health in that field.

### Sindu Govindapilla, MD, MPH

2017-2019

Dr. Govindapilla focused on health and developmental issues affecting children in conflict and displacement. She studied a number of humanitarian crisis situations and gathered data on the impact of disasters on children and their families. She is now working with several humanitarian organizations in Canada and is continuing to collaborate with the Harvard Humanitarian Initiative.

### Nirmala Narla, MD, MPH

2017-2019

Dr. Narla was based at Lao Friends Hospital for Children, supporting teams of local Lao doctors in providing inpatient, outpatient, and emergency room services, working to establish evidence-based practices in a limited resource setting. She assisted in organization and capacity building for the recently established Thalassemia Clinic, with a specific focus on improving adolescent care transition through logistical and educational interventions. She concurrently completed her MPH at the Harvard T.H. Chan School of Public Health, where she was involved in development of innovative communication and home-monitoring tools for pediatric care. She is now working as a hospitalist in the Intermediate Care Program at Boston Children's Hospital and South Shore Hospital, with plans for ongoing international collaboration at LFHC and HSPH.

### Oludare Odumade, MD, PhD

2017-2019

Dr. Odumade worked on clinical and research initiatives in maternal and child health with Dr. Grace Chan at Saint Paul's Hospital Millennium Medical College in Addis Ababa, Ethiopia. She focused on characterizing neonatal sepsis and maternal reproductive tract colonization, identifying bacterial etiologies and antibiotic resistance patterns. She has joined BCH's Precision Vaccines Program, directed by Dr. Ofer Levy, where she is participating in research employing systems biology to define biomarkers of neonatal vaccine immunogenicity as part of an NIH Human Immunology Project Consortium project. After fellowship, she will continue her research and serve as an attending physician in the Intermediate Care Program at Boston Children's Hospital and also work as a neonatal hospitalist.



## Virginie Clavel, MD

2016–2018

During fellowship, Dr. Clavel worked at University Hospital in Mirebalais, Zanmi Lasante/PIH (Mirebalais, Haiti). She spearheaded the implementation of the Pediatric Early Warning Score on the Pediatric Ward. Dr. Clavel provided direct clinical care in inpatient wards, ED, and ICU, supervised residents on the inpatient wards, created and supervised acute care rotations for 3rd year residents, and provided support during the diphtheria epidemic. She also conducted teaching sessions on clinical subjects, resuscitation training for all emergency & pediatric residents, as well as providing research mentorship, resident standardized evaluation and simulation teaching within those departments. Dr. Clavel also received her MPH at the Harvard School of Public Health during her fellowship. Dr. Clavel is currently a pediatric hospitalist at University of Montreal and part of the Global Child Health program of McGill University. She is helping to lead educational programs within our Global Pediatrics Fellowship program and serves as a Haiti site mentor for the fellowship.

## Bianca Quinones-Perez, MD

2016-2018

During fellowship, Dr. Quinones-Perez worked at Laos Friends Hospital for Children (LFHC). She established a multidisciplinary simulation-based resuscitation curriculum at LFHC. Evaluation of the course assessed staff performance across 4 domains, in addition to self-reported confidence. Dr. Quinones-Perez is currently a pediatric hospitalist at Floating Hospital for Children at Tufts Medical Center.

## Chiquita Palha De Sousa, MD, MPH

2016–2018

During fellowship, Dr. Palha De Sousa served as a District Clinical Advisor with Inshuti Mu Buzima/PIH Rwanda at Kirehe District Hospital, a busy, rural hospital in eastern Rwanda. Dr. Palha De Sousa provided direct clinical care, mentorship, and teaching of local physicians and nurses in Neonatology and Pediatrics. She spearheaded a birth asphyxia audit committee, conducted an analysis of trends in neonatal mortality, performed a gaps analysis to identify strategies for health system strengthening within the neonatal care unit. She also instituted and co-led weekly CME lectures, supported trainings on neonatal care, resuscitation, and malnutrition, and participated in the Rwandan neonatal technical work group focused on improving neonatal care at a national level. Her scholarly project focused on implementing a package of interventions to promote early and exclusive breastfeeding of vulnerable neonates. As an artist, she also illustrated various customized patient educational materials and she continues to do so. Dr. Palha De Sousa is currently a pediatric hospitalist in Salinas, CA engaged in global health mentorship and education through UCSF.

## Jessica Bradford, MD

2015-2017

During her fellowship, Dr. Bradford led the expansion of the Pediatric Development Clinic (PDC) throughout district hospitals and clinics in Rwanda. She focused her scholarly work on describing factors contributing to sub-optimal growth in preterm and low birth weight infants, with the mHealth growth and nutrition app stemming from her initial quality improvement work in this area. After fellowship, Dr. Bradford stayed on with Inshuti Mu Buzima/Partners In Health, as a pediatric district clinical advisor.





## Sajithya Perera, MD

2015–2017

Dr. Perera spent her fellowship serving as a pediatrician at Saint Nicolas Hospital in Saint Marc, Haiti. She provided direct clinical care in the NICU, inpatient ward, malnutrition ward, outpatient clinic, and the emergency department. She also led an initiative to improve the quality of therapeutic milk delivery in the inpatient malnutrition ward. Dr. Perera's other responsibilities included resident supervision and teaching, and she also led PALS training sessions for the nursing staff. Dr. Perera's primary fellowship project focused on the implementation of a developmental screening tool (ASQ) and an adapted version the UNICEF Care for Child Development (CCD) package into the outpatient malnutrition program at Saint Nicolas Hospital. The intervention consisted of visits to the outpatient malnutrition clinic, plus bi-weekly home visits by a community health worker trained in using the CCD package. She is currently a pediatric hospitalist at Nationwide Children's Hospital.

## Ophelia Adipa, MD

2014–2016

During fellowship, Ophelia traveled to Mbale, Uganda as a consultant pediatrician at the CURE Children's Hospital of Uganda and was in Liberia as pediatric faculty, teaching and mentoring residents and interns. Her time was split between the John F. Kennedy Medical Center in Monrovia and Phebe hospital in Suakoko. Ophelia is currently a hospitalist in the Children's National Hospital community network. She is also a faculty member the University of Ghana, where she supports pediatric residency training.

## Unami Mulale, MD

2015–2016

Unami grew up in Botswana as one of six children, and was raised by a mother who didn't complete elementary school and a father who went against tradition to educate his girls. After completing her education at college level in Botswana, she went to medical school in Grenada and subsequently did Pediatric Residency and Pediatric Critical Care Fellowship in New York, with a longstanding vision to contribute to building Botswana's first children's hospital. Unami views medicine as a platform to bring complete wellness and wholeness, and not merely to treat disease. She is currently the Head of Pediatric Critical Care and Lecturer at the University of Botswana School of Medicine.

## Jennifer Werdenberg, MD

2014–2016

Dr. Werdenberg worked in Rwinkwavu, Rwanda, with Inshuti Mu Buzima/Partners In Health, during her fellowship. There, she taught and worked side-by-side with local General Practitioners, interns and nurses and as a member of the team implementing and evaluating the All Babies Count initiative (ABC). ABC is a comprehensive, intensive 18-month intervention across 25 facilities serving 500,000 individuals aimed at decreasing neonatal deaths through a combination of clinical mentorship and system-level improvements including district-wide learning collaboratives. After fellowship, she joined Dell Children's Hospital as an ER acute care provider and stayed on with PIH/IMB as the interim Chief Technical Advisor for Maternal Neonatal and Child Health.



## Xinshu She, MD, MPH

2014–2016

During fellowship, Xinshu spent 6 months each year in Saint Marc, Haiti, working with Partners In Health. There, she worked side-by-side with local pediatricians and nurses; taught residents, medical students and nurses; and carried out quality improvement projects. She piloted a participatory art project aimed at reducing stress, enhancing patient self-expression, and promoting community bonding. She also helped start an Early Childhood Development Program for malnourished children to help assess baseline needs and pilot a home-based intervention.

Dr. She is currently a pediatric hospitalist at the California Pacific Medical Center. She is active in leading quality improvement projects aimed at improving staff morale, PMD-hospitalist communication and evidence-based algorithms. She is continuing her Global Health work through online teaching of Mental Health First-Aid to 5-grade students in rural China. She recently donated a library in a mountain region in China through the Overseas Chinese Education Foundation. She also continues to be a medical consult for the 8th year at A Life A Time Foundation, an organization that provides free surgical care for children from rural families who cannot afford treatment. She is also a Pediatric Mental Health Educator, with the Overseas Chinese Education Foundation.

## Leana May, DO, MPH

2013–2015

During her fellowship, Dr. May worked as a district clinical advisor in pediatrics in rural Rwanda. Her work centered around capacity building through clinical care, and pediatric oncology programmatic work. Dr. May is currently the Associate Director of the Global Health Track at the University of Colorado School of Medicine and the co-director of the pediatric residency global health track at Children's Hospital of Colorado. Dr. May has worked in 9 resource limited nations, most recently living and working half time in Rwanda. Her recent research has focused on the Rwandan national pediatric oncology protocols, and their delivery, as well as an ongoing low cost non-electric neonatal biotechnology clinical trial. Dr. May's additional global health scholarly interests include building health care capacity through health system strengthening and non-communicable diseases.

## Brittany Potts, MD

2013–2015

Dr. Potts spent her fellowship serving as a pediatrician at St. Nicolas Hospital in St. Marc, Haiti. She focused on acute care delivery and on improving the delivery of nutritional support to severely malnourished children. She also assisted colleagues at the St. Damien Hospital in Port Au Prince with their programming around children with severe chronic health conditions, and collaborated with the Haitian Pediatric Society on initiatives pertaining to pediatric residency training. Dr. Potts is currently the Associate Director of Pediatric Global Health at Akron Children's Hospital.



## Theresa Strong, MD, MPH

2013–2015

Dr. Theresa Strong spent part of her fellowship in Liberia, working at the JFK Hospital in Monrovia on the partnership medical residency training program. As a result of the Ebola outbreak she was redeployed to Indonesia where she worked on decision support tool implementation and to Laos where she supported the opening of a pediatric hospital. After fellowship, Dr. Strong earned an MPH at Harvard School of Public Health and continued her work at Laos Friends Hospital for Children. She is currently an attending physician at South Shore Hospital, in Weymouth, MA.

## Jill Veselik, MD

2012–2014

During her fellowship, Dr. Veselik worked in rural Rwanda where she provided pediatric care and participated on the teams that wrote the protocols for the newly established Pediatric Development Clinic. She is currently an attending physician at St. Luke's Hospital in New Bedford, MA.

## Chris Carpenter, MD, MPH

2011–2013

During his fellowship, Dr. Carpenter worked in Haiti where he improved pediatric care by training local doctors and nurses at St. Marc's district hospital. At the end of his fellowship, he co-founded the Kay Mackenson clinic for children with chronic diseases in Pierre Payen. He continues his involvement with Kay Mackenson and also runs a virtual case conference for global health fellows nationally. He is now Vice Chief of Staff at Natividad Hospital, affiliate of UCSF in Monterey, California.

## Sara Gonzalez, DO

2011–2013

During her fellowship, Dr. Gonzalez worked at St. Marc's Hospital in rural Haiti providing inpatient clinical services. She carried out several projects on neonatal nursing education with an emphasis on breast feeding promotion. After fellowship she worked as an attending physician at the St. Luke's Hospital (New Bedford, MA) with continued work in Haiti.

## Molly Moore, MD

2010–2012

During fellowship, Dr. Moore served as a district clinical advisor in pediatrics in rural Rwanda. She worked on national pediatric oncology protocols, supported a program to prevent mother-to-child transmission of HIV, and ran a pediatric HIV education program for nurses. She currently holds an academic appointment at the University of Vermont Larner College of Medicine, where she is involved with global health medical education.

## Vanessa Wolfman, MD

2010–2012

During fellowship, Dr. Wolfman worked as a district clinical advisor in pediatrics in rural Rwanda. Her activities included clinical mentorship and health systems strengthening. In 2012, after completing fellowship, she went on to work in Sierra Leone to support the National AIDS Control Program. From 2014-2016, she joined the International Medical Corps as the Emergency Medical Director in Sierra Leone, to support the Ebola outbreak response. She is currently the Technical Director for Pediatric and PMTCT Clinical Services for the Military HIV Research Program at the Henry M. Jackson Foundation.



**Boston  
Children's  
Hospital**

Until every child is well

Global Health  
Program