

EEG – Inpatient Long Term Monitoring

My Hospital Story



Boston Children's Hospital

September
2023

I'm getting ready for my overnight visit to Boston Children's Hospital. During my visit, I will get an EEG.



First, the
technologist will
come to my room.

They will explain
how the EEG
works.



Boston Children's Hospital
Epilepsy Center
**Seizure Assessment During
Video EEG Monitoring**

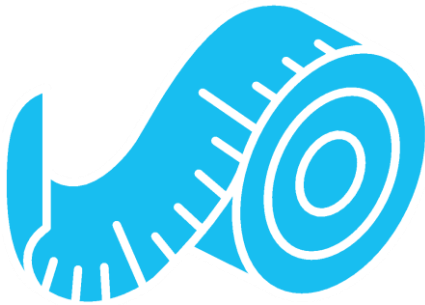
- Do not stand between camera and patient.
- Give words to assess memory after seizure—
e.g. red, dog, or house.
- Show an object to assess memory recall after
seizure—e.g. pen, wrist watch, or cup.
- Give motor commands e.g. raise right [left] arm.
- Test for motor awareness.
- Describe details of the event e.g. eye deviation,
convulsion, body stiffening, etc.
- Ask patient/caregiver to report seizure details.



Then, the technologist will have me lie down on the bed. I can look at a toy or watch a movie. I can remember to stay still so the buttons don't move.



Next, the
technologist will
measure my
head with a
tape measure.





The technologist will draw dots on my head with a soft crayon to mark where the electrodes will go. The electrodes look like small buttons.

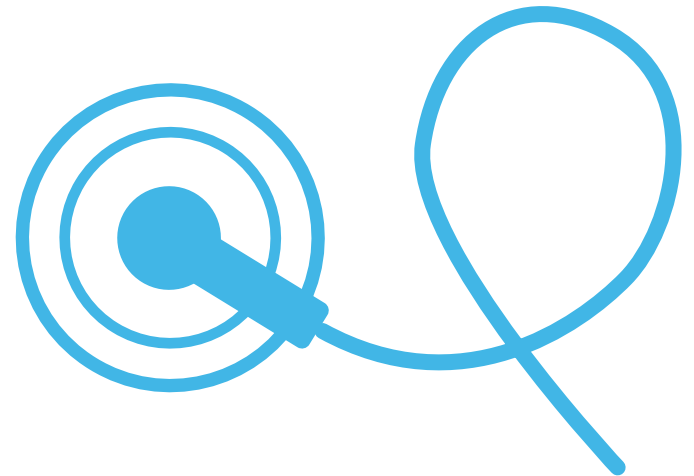


Next, the technologist will use a Q-tip and soap to rub off the crayon dots. The soap might feel sandy.

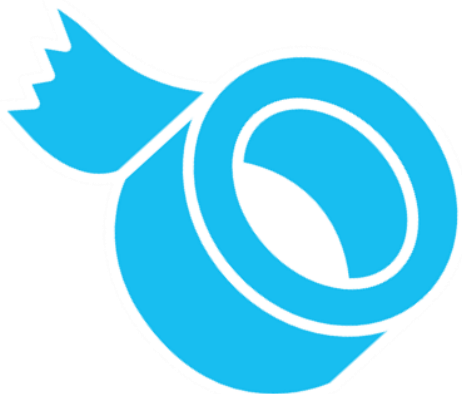




Next, they will place electrodes, or buttons, on my head.



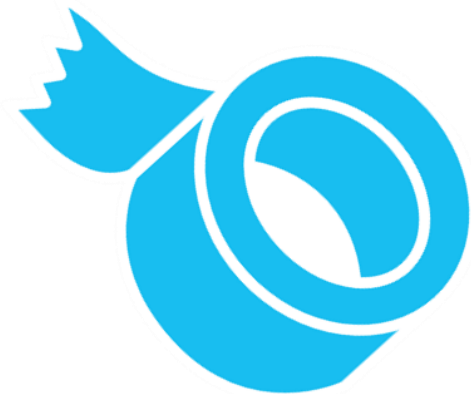
The technologist will use special tape to help the buttons stay in place.





I may even have
some on my
chest or on my
chin!

This is OK.



Next, the
technologist will
wrap my head
with soft gauze.





They will put an
electrode hat
on my head.



It's very important that I keep my electrode hat on. Everything I need will be in a blue backpack.





I can play, eat and sleep while I have my electrode hat on.



The technologist will tell me when it is time to take my electrode hat off.

Everyone will be so proud of me!



Developed by:

Autism Spectrum Center & Child Life Services